

PRESENTATION

We present in this report of activities what has been a long journey of a year and a half of existence of the Ignatian Way. A time of great progress and consolidation of a project that, because of its complexity, does not cease to pose new challenges.

Considering its young age, we are happy to say that the Ignatian Way is in very good health: the number of pilgrims is growing significantly and their origin is very international. Most importantly for us, the spiritual foundation of the Camino is the most striking feature of the experiences that pilgrims report to us.

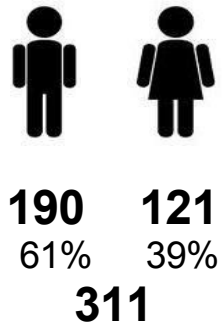
To continue in this same line, from the Ignatian Way we are going to promote the orientation work to all the groups and institutions that wish to live the experience of the Ignatian pilgrimage or organize an experience for others. Travel agencies specialized in pilgrimages and community groups have already contacted us to promote the Ignatian Way. National but also international institutions are preparing activities for the summer 2014 and also 2015. The contacts with local and regional administrations must be expanded and multiplied. We know that we still have a long way to go until the great celebration of the fifth centenary of the conversion of Ignatius and his first pilgrimage to Jerusalem in 2021-2022.

It is our desire to continue to grow and consolidate this pilgrimage that will bring great Ignatian fruits to the generations of the 21st century, and hopefully to the generations to come.

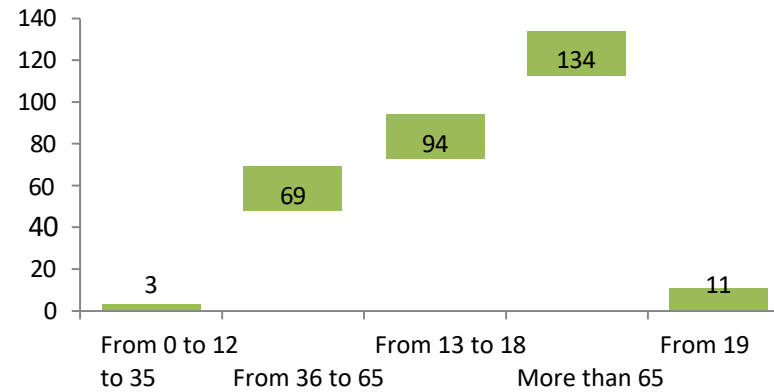
Josep Lluís Iriberry, sj.
Director Ignatian Way

IGNACIAN PILGRIMS 2011, 2012 and 2013

Gender

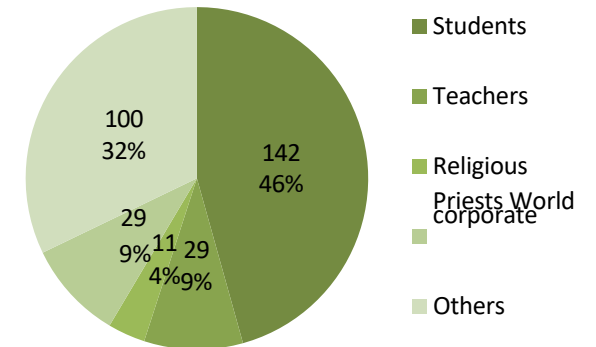


Age ranges



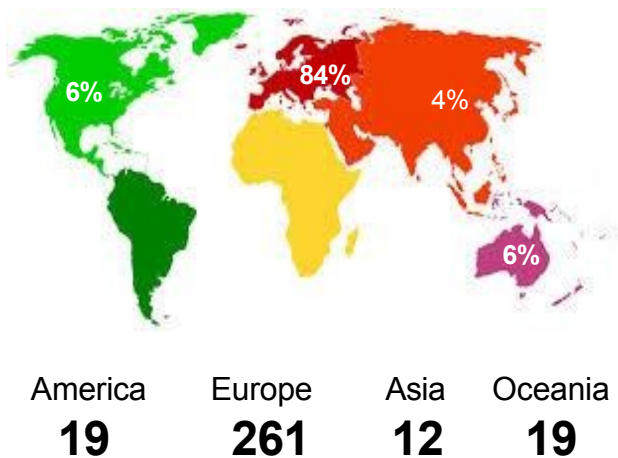
Average age 35 years

Professions



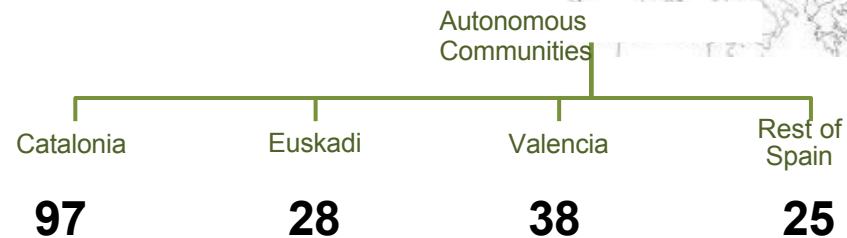
Source

International



Rest of Europe
73

Spain
188

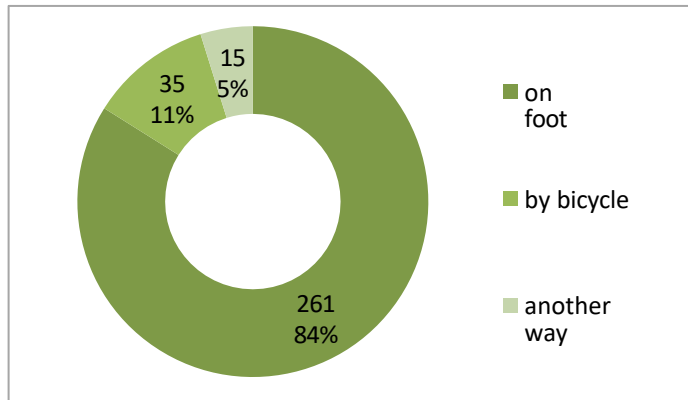


IGNATIAN PILGRIMAGES

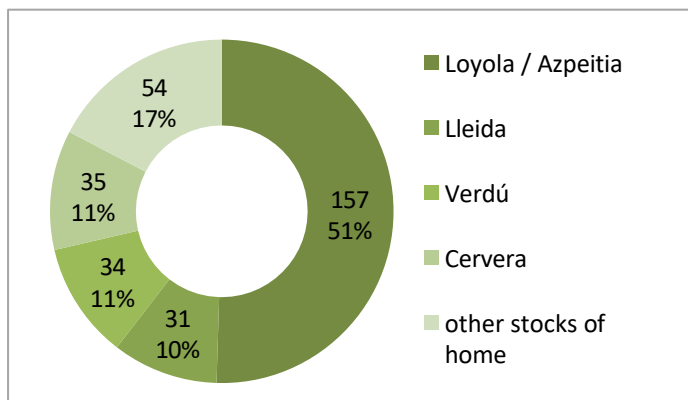
Pilgrimages per year

2011	2012	2013
41	91	179

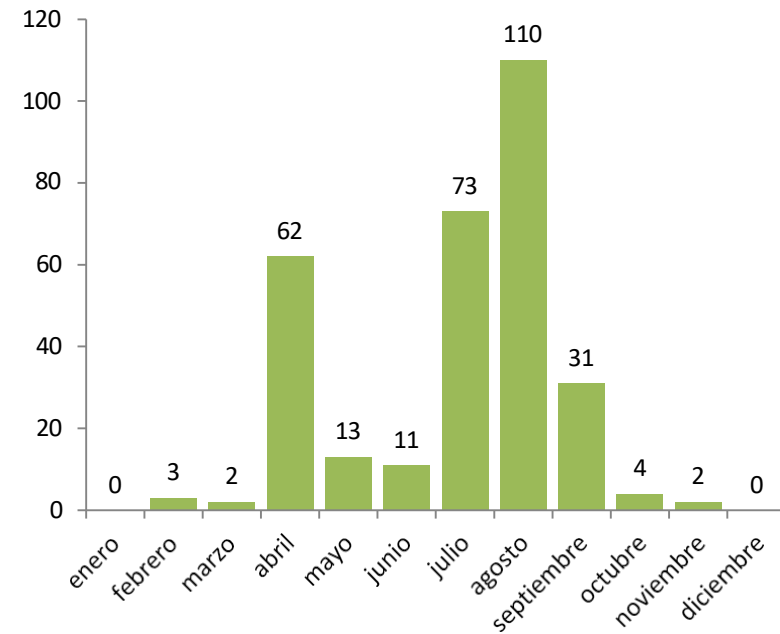
Form of pilgrimage



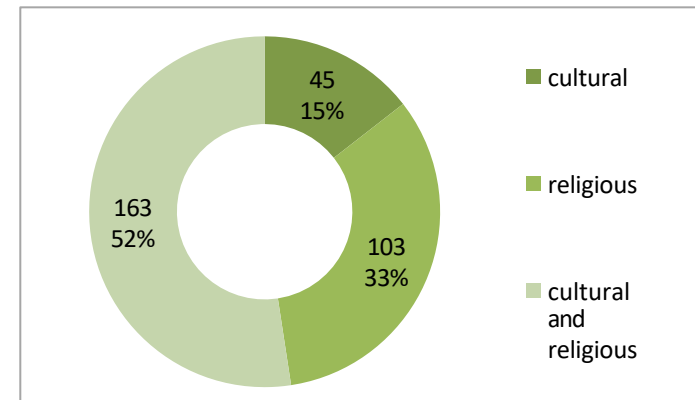
Starting point



Starting month

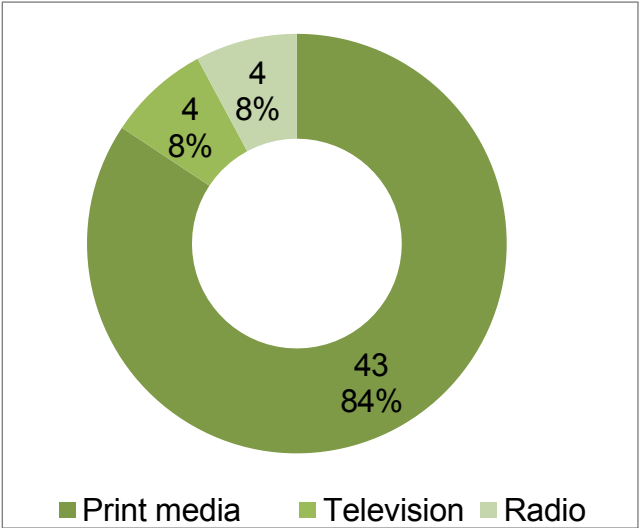


Reason for the pilgrimage



PRESS APPEARANCES

Total number 51



By geographic area

